

S'more News

September 2021: Back to Troop Edition



Champion Girl Ambition

Girl Scouts has recently gone through a brand refresh. I LOVE our new Girl Scout brand and how it will help us launch a very strong membership year!

So, what's behind this new brand and what does it mean to champion girl ambition? For one thing, it's her ambition and for each girl it will be different. We adults in Girl Scouting have the privilege of helping each girl discover her ambition: what excites her, what she's curious about, what she cares about. And then being the champion for her ambition.

At our August kickoff, I asked our Program Ambassadors and Outdoor Advocates how they have championed girl ambition in their troop or service unit, and I heard some heartfelt stories. I heard stories of empathy when girls noticed another girl who couldn't participate in an activity because she was differently abled, and they figured out a way to include her in a meaningful way. I heard stories of girls struggling to complete one of their highest awards because of roadblocks resulting from COVID-19 and how they used their resilience to identify alternate solutions. I heard stories of girls who challenged themselves to do something that scared them and the joy they felt when they succeeded!

Volunteers who champion girl ambition are the lifeblood of our amazing movement! And when you see girls succeed at whatever is important to them, you realize that you continue choosing Girl Scouts as the place where you dedicate your heart because you know you are making a significant difference in the lives of girls.

So, whether your girls are climbing to the top of a tree or to the top of their class, being a Girl Scout will get them there because of you! Because Girl Scouts isn't just another activity—it's a way of life. It's part of who we are.

Thank you for embarking on what I know will be an awesome year in GSSNE!

Warmly,
Your CEO - Pam

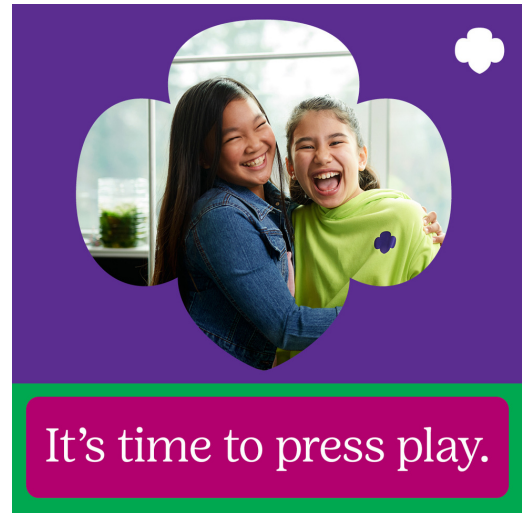
Time to Renew, Girl Scout!

Connecting. Testing her strength. Making a difference.

Renew today to make sure your Girl Scout continues to shine her brightest.

She's ready to explore, learn, and create.
She's ready to come back.

Press play with Girl Scouts and watch her confidence soar.



[RENEW TODAY!](#)

You're
Invited



Become a Lifetime Member

In less than three years, thanks to lifetime members, more than 30,000 girls have experienced Girl Scouts whose families would not otherwise have been able to afford it. Become a lifetime member for \$400 (or \$200 for alums under 30 and volunteers of 10+ years!) to champion girl ambition plus reap the benefits of discounts at companies founded by women and invitations to special events.

[LEARN MORE](#)

New badges are here!

Now there's 28 new ways for Girl Scouts of all ages to explore their world, either online or unplugged. With this year's newest class of badges, Girl Scouts can take on more topics that matter to them, like getting outside and discovering math in nature (sponsored by Johnson & Johnson), taking their online cookie business to the next level, and learning how to be digital leaders (sponsored by Instagram). Get ready, because these new badges will spark her sense of wonder this year!



[SEE WHAT'S NEW](#)

Help make a difference in the life of a girl

It's hard to place a price tag on the value of our programs and the life changing benefits felt by our girls, but did you know it costs \$594.00 to support one girl member of courage, confidence, and character for one full year?

All donations to our Family Partnership Campaign directly serve girls within our council and help make the Girl Scout experience complete for your daughter and her friends. GSSNE could not deliver our programs and have a positive impact on generations of girls without donors like you. Please help be a part of that impact.

Interested in making a tax deductible gift to GSSNE's Family Partnership Campaign? Here are a few ways to give and directly support girls in our council!

- Online at www.gssne.org/donate and select Family Partnership from the dropdown menu
- Personal or Business Check
- Amazon Smile: [Shop online and support Girl Scouts](#) at the same time! When shopping on amazon.com, select GSSNE at checkout and a percentage of your purchase helps the council.

[LEARN MORE](#)

Back to Troop Day

We had a great time at our first annual Back to Troop Day on August 28th! It was so nice to welcome our returning Girl Scout families and have an opportunity to introduce Girl Scouts to new families who are just beginning their journey with us. We're off to a great start with our beautiful, budding rock garden, and will be sending out information soon on how your troop can participate in Kindness Rocks and our Rock Garden Dedication Ceremony. A special thank you to Barbi-Jo from 92 Pro FM and the Providence Bruins for making guest appearances and giving away some awesome prizes. Sophie M from Fall River was our lucky winner of the Jonas Brothers concert tickets!

There will be more exciting events for new and returning Girl Scout families throughout the year, so be sure to follow GSSNE on [Instagram](#) and [Facebook](#) for updates!



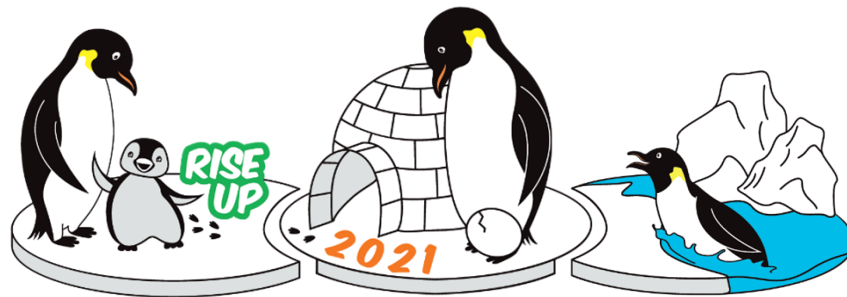
Fall Product Program

The 2021 GSSNE Fall Product Program began on Thursday, September 16 and runs through Friday, October 29!

This program is a great way for girls to learn valuable skills like goal setting, decision making, money management, people skills, and business ethics. The Fall Product Program is a simple, fun introduction to Girl Scout Product Programs.

During the Fall Product Program, girls participate in selling candy and nuts from Ashdon Farms and magazines from M2 Media, all of which go a long way to get with troop start-up funds! Girls can participate online with paper candy/nut order cards. All registered Girl Scouts, Daises to Ambassadors, can participate!

The mascot for 2021 is the emperor penguin, and the theme is 'Rise Up'.



New for 2021!

Craving something new and delicious? We've added Caramel Apples and Sweet & Salty mix to the girl order card this year!

Every year we offer two new tins filled with tasty treats! This year will be a Four-Sided Uniform tin filled with Mint Treasures and a Bunny Holiday Tin filled with Milk Chocolate Covered Pretzels. These tins make great gifts for the holidays! There are also additional candy and nut items available online for holiday gift giving.



Girls have the option to use the paper order card, digital ordering options, or both for candy and nut orders. Magazine sales and renewals will be online only. We are encouraging girls and customers to check out the great online ordering options this year, as well as the girl delivered option where you would have your candy and nut items dropped off by the girl with a contactless delivery if needed.

For more information about how to participate in the Fall Product Program visit gssne.org/fallproduct.

Want to order, but don't know a current Girl Scout? Contact GSSNE Customer Care at CustomerCare@gssne.org or 401-331-4500!

[LEARN MORE](#)

New cookie coming in January 2022!

Adventurefuls™ is an indulgent brownie-inspired cookie with caramel flavored crème and a hint of sea salt.

NEW!



Adventurefuls™

[LEARN MORE](#)

Gold Award Girl Scouts

Gold Award Girl Scouts are the dreamers and the doers who take "make the world a better place" to the next level. The Girl Scout Gold Award, the highest honor a Girl Scout can earn, is the mark of the truly remarkable—proof that not only can she make a difference, but that she already has. We would like to congratulate the following Girl Scouts who earned their Gold Awards in 2021!



Mckayla A., Somerset, MA: Preserving Vietnam War Veteran History

Katie B., Exeter, RI: Teen Organ Donation Registration Awareness

Alexia F., Scituate, RI: Sustainable Existing

Abigail G., Pawcatuck, CT: STEM Exploration

Emma G., Scituate, RI: Playground 2.0

Corinne R., Wakefield, RI: Dance for All Abilities

Zoie S., Foster, RI: Elderly & Handicapped Water Assistant

Lucy S., Lincoln, RI: Making a Stress-Free Breakthrough

[LEARN MORE](#)

Sponsors

We would like to send a big Girl Scout thank you to all of our generous and supportive event sponsors who help GSSNE build girls of courage, confidence, and character who are already making the world a better place!



AUTO HOME LIFE



G L O B A L

Creative Engineered Solutions

Leading Women of Distinction

Join us for the 2021 Leading Women of Distinction Awards Breakfast:

Thursday, October 7, 2021

8:00 AM to 9:30 AM

Squantum Club

947 Veterans Memorial Parkway, Riverside, RI 02915

Tickets: \$50.00 per person or \$450.00 for a table of 10

We acknowledge that you may have reservations because of the ongoing COVID-19 pandemic, so are doing a couple things to address concerns. For those attending in person, we are limiting the number of attendees to ensure social distancing and will ask attendees to wear masks except while seated, regardless of vaccination status. For those who prefer to watch the taped event at their leisure, we will be providing a link to the event recording after the event for anyone who makes a tax-deductible contribution of \$35 or more.

The deadline to purchase tickets is Friday, October 1.

[PURCHASE TICKETS](#)

We are excited to announce the 2021 Leading Women of Distinction Honorees:

Sara DeCosta-Hayes, Owner of RI Sting Girls Hockey, Olympic Gold & Silver Medalist

Marie Ghazal, CEO of Rhode Island Free Clinic

Pamela Harrop, MD, President, Medical Associates of Rhode Island

Hilary Levey Friedman, PhD, Professor at Brown University & Former President of RI NOW

Eva-Marie Mancuso, Managing Partner of Hamel Waxler, Allen and Collins Law Offices, Founder Clothes for Kids

Jennifer Pereira, Vice President of Grant Programs at Rhode Island Foundation

New Staff

Lisa Chambers, Recruitment Manager



Lisa, who grew up a Military Brat, graduated from New Mexico State University with a degree in Wildlife Science. She started her career here in Rhode Island with the National Wildlife Refuges in Visitor Services, Volunteer Management and Environmental Education. After taking a break from her 13-year career to raise her now 5-year-old twin daughters she is excited to be a part of GSSNE. Lisa lives in North Kingstown with her family. She enjoys exploring the outdoors with her family, berry and apple picking, and trying all the delicious food this area has to offer.

Heidi Conley, Executive Assistant



Heidi is a Rhode Island native who received her bachelor's degree in journalism from URI. She shares a home in Warwick with her husband Bryan, their 6-year old son Joshua, dog Phoenix, and cats Mikey, Felix, and Noel. Heidi's background includes a position as newspaper reporter, technology website editor, and animal hospital manager. She has been in the animal rescue field for 12 years and most recently in 2018, cofounded the volunteer-based rescue, Ten Lives Cat Rescue. Being able to help animals professionally was a dream of hers as a young girl. Heidi is very excited to work with Girl Scouts and encourage all young girls to follow their dreams of making the world a better place.

Frances Eames, Human Resources Manager



Fran grew up in Upstate New York and moved to Rhode Island in 1981. She lives in North Kingstown with her husband and their dog, Ollie. Her educational background includes a bachelor's degree in Phys Ed from SUNY Cortland; a master's degree in Educational Computing & Technology Leadership from Johnson & Wales University; and a Certificate in Human Resources from Bryant University/Executive Development Center. Fran has 20 years of experience in Human Resources and holds SHRM-SCP and HRCI-SPHR certifications. She is eager to bring her experience to GSSNE and is honored to be supporting the Girl Scout Mission. During her free time, Fran and her husband enjoy spending time in New Jersey with their son and his family.

Sarah Long, Recruitment Manager



Sarah comes from a military family, but primarily grew up in Rhode Island. She earned her bachelor's degree in writing from the University of Rhode Island and is currently studying at Emerson College to obtain her master's degree in digital marketing. Her free time is spent with her scruffy dog, Gryffin, lounging and reading, or playing at a local dog park. Sarah is excited to encourage girls to take advantage of the amazing opportunities Girl Scouts has to offer.

Office Closings

Please note, the GSSNE Office and Shop at 500 Greenwich Ave., Warwick will be closed on the following dates. As always, follow us on [Facebook](#) and check our [website](#) for the most up-to-date information.

October 11, 2021

November 11, 2021

November 24-28, 2021

December 23-27, 2021

December 31, 2021

Summer Camp 2021

We missed you last summer and we were so excited to be back this year!

We missed the campfires, the friendships, and of course, the great outdoors. This year, although new and different, was a great success! GSSNE was able to serve 448 girls this summer, many of whom attended several camp sessions. Girls spent the summer participating in many fun camp activities like archery, swimming, boating, hiking, rock walls, leaning outdoor skills, and so much more! They also enjoyed singing, making new friends, making campfires and smores, and making so many new memories. Girls were also invited to keep the camp fun going by staying late or sleeping over at camp on Thursday nights.

It was great to have camp back up and running this summer. We greatly enjoyed spending the summer with our campers.



Camp Endowments

Endowments help support outdoor experiences for girls for generations to come. Girl Scouts of Southeastern New England has established Endowment Funds for Camp Hoffman in West Kingston, RI and Camp Rocky Farm in Newport, RI. All dollars contributed will be invested and the earnings from those dollars will be used to support ongoing maintenance and operational needs.

Endowment Fund for Camp Hoffman

Camp Hoffman is one of the oldest Girl Scout camps in the country and we're so proud of its long history, unique traditions, and deep magic. The GSSNE Endowment Fund for Camp Hoffman was created at the 95th anniversary celebration. The endowment will support the longevity of this special Girl Scout camp, ensuring the opportunity for all girls to enjoy outdoor experiences for years to come.



Endowment Fund for Camp Rocky Farm

Camp Rocky Farm in Newport, RI was founded in 1950. This 7-acre property is right by the beach and is within walking distance of Ocean Drive and the Newport Mansions. At nearby Gooseberry Beach, campers build sandcastles, hunt for hermit crabs, and enjoying swimming. The Endowment Fund for Camp Rocky Farm was created in 2019 to allow girls to continue to enjoy the nature and history of the area.



Commemorative Bricks

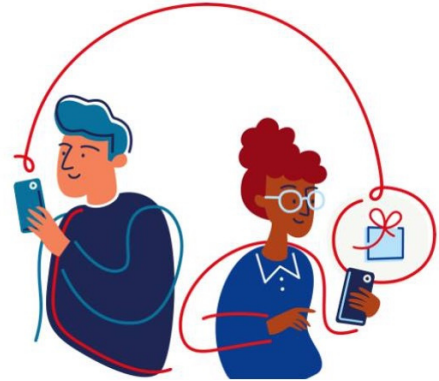
Become a part of the future of Camp Hoffman by purchasing a commemorative brick. Bricks are \$100 each and will create a pathway at the foot of Roof Tree, the science education center! Bricks can be purchased by individuals, troops, families, or in memory of someone special. Brick purchases will support the Camp Hoffman Endowment.



[LEARN MORE](#)

Donate your myWalgreens cash rewards to GSSNE

Girl Scouts of Southeastern New England is participating in the myWalgreens donation program! You can donate your myWalgreens cash rewards to GSSNE through November 30, 2021. At Walgreens, you'll earn unlimited 1% Walgreens Cash rewards when you shop and you can choose how much to donate. It's that easy. Whether you'd like to contribute \$1, \$5, or more of your Walgreens Cash rewards you'll be making a big difference. It really adds up!



[LEARN MORE](#)

GSSNE Girls Hockey Night



girl scouts
of southeastern
new england



Join GSSNE for a night with the Providence Bruins on Saturday, October 9, 2021 at 7:05 PM at the Dunkin' Donuts Center. Purchase tickets at www.providencebruins.com/gssne.

All Girl Scouts, family members, and friends receive this exclusive discounted offer. All tickets for this event are just \$22 per person. You will receive great lower level seats and all kids will receive a free P-Bruins Hat & Patch! Representatives from Boston Pride & Brown University women's hockey teams will also be in attendance.

[LEARN MORE](#)

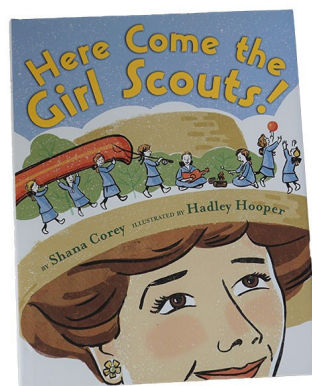
Shop Corner

The GSSNE Shop is back open for in-person shopping, but with some new hours!

- The shop will be open to the public/walk-ins on Thursday and Friday from 9am-5:30pm and Saturdays 10am-2pm.
- The shop is closed to the public/walk-ins Tuesday and Wednesday. However, depending on staff availability, we may be able to serve you on these days. Please call ahead to see if someone is available in the shop if these are the days you wish to visit.
- The GSSNE Shop will be completely closed on Mondays.

The GSSNE Shop has all the new badges and badge requirement packets. New uniform pieces are being received as they become available. And stop by the store for in-store sales and promotions!

Juliette Gordon Low's birthday is October 31 and we're offering some specials for the month of October! With any Juliette Gordon Low merchandise purchase, you'll receive a special gift (while supplies last)!



[SHOP ONLINE](#)

We hope you've enjoyed the Back to Troop Edition of S'more News!

To keep up with all things GSSNE follow us on:



[@GSSNE](#)



[@GSSNE](#)



[@GirlScoutsofSNE](#)

Visit gssne.org for all things GSSNE!



Share a Girl Scout Story with GSSNE today!

Have a Girl Scout Story to share? We want to hear it! Click below to submit your story to GSSNE. It may be featured in our social media posts, spotlighted on our website, included in an upcoming S'more News, or some other super fun way!

[Submit your story!](#)