



2016 ANNUAL REPORT



Caring



Strong



Honest



Wise



YOU CONTRIBUTE TO OUR SUCCESS

This year has flown by! We have had many accomplishments as a Girl Scout council, and we greatly appreciate the work you do to continue sharing the Girl Scout mission of building girls of courage, confidence and character who make the world a better place. As you turn through the pages of our 2016 Annual Report you will see exciting highlights from the past year. We can only hope 2017 will bring forth even more opportunities for our members and our organization!

The highest award in Girl Scouting was celebrated in 2016 with the commemoration of the centennial year of the Gold Award! This award has been called a multitude of names including the Golden Eaglet, First Class and Curved Bar. And while its name has changed, the significance of earning the highest award in Girl Scouting has not. At the moment only 5.4% of Girl Scouts achieve this highest honor. To celebrate the significance of the centennial we honored the 2016 class of Gold Awardees at the Rhode Island State House where former Girl Scout, Governor Gina Raimondo spoke and personally congratulated each awardee on their hard work and commitment to their community.

Through the Gold Award process, girls identify community and world issues that matter to them and then they carve out a sustainable project that addresses the issue in some significant way. I can only imagine each girl's ultimate legacy over a lifetime of leadership and service!

If you are reading this message, you have contributed to the success of girls who have earned the Gold Award, who are on the path to a higher award, or who are growing each day through their dedication to Girl Scouting. Thank you—we couldn't be more grateful. You have also contributed to other successes we had in 2016, and here are a few...

- We secured a grant from The Champlin Foundation to build a yurt village at Camp Cookie—we break ground in the spring of 2017! A large percentage of our girl members experience the joys of outdoor programming and Camp Cookie will now have an extra special place for those girls to sleep outdoors!
- Global programming was added as an additional program pillar for GSSNE members and we are part of the GSUSA Global Action Team. Be on the lookout for increasing numbers of global opportunities for girls!
- The Camp Hoffman endowment fund was created at the 95th Anniversary celebration! All dollars contributed will be invested and the earnings from those dollars will be used to support the operation of Hoffman for many years ahead. Our goal is to grow this endowment over the next five years and announce the total at the 100th Anniversary of this very special camp!

Thank you again for your commitment to the Girl Scout mission. We hope you are proud of where we've been and where we are going. Enjoy this look back at 2016.

Yours in Girl Scouting,

The image shows two handwritten signatures in black ink. The signature on the left is 'George W. Anastos' and the signature on the right is 'Pam Kline'. Both signatures are written in a cursive, flowing style.

George and Pam



YEAR IN HIGHLIGHTS

October 1, 2015 – September 30, 2016

Fall Product Sale Program

During the fall of 2015, approximately 2,000 girls participated in the fall product sale program, selling subscriptions to magazines from QSP/Great American and tasty treats from Ashdon Farms. These sales help troops to earn start-up funds for the troop year and help develop skills such as decision making, goal setting, money management, and more. They also learned about the importance of community service through the share program by donating 1,569 cans of nut product to Operation Holiday Cheer. This organization sends much needed holiday care packages to our local military stationed overseas, who do so much for our country. Troops who participated in the sale earned close to \$30,000 in troop proceeds, along with some super recognitions.

New CEO Joins GSSNE

In November 2015, Pam Hyland joined Girl Scouts of Southeastern New England (GSSNE) following a thorough national search for a Chief Executive Officer. Prior to GSSNE, Pam held several leadership positions amid various Girl Scout councils in South Carolina, New York, Virginia and overseas. The GSSNE Board of Directors found that Pam's experience within Girl Scouting and her 40 years of progressive management experience in the not-for-profit sector would enable her to immediately step in and take charge at GSSNE. Pam has been a Girl Scout since 4th grade and truly believes in the Girl Scout mission, promise and law.



Second Annual Leading Women Awards

The second annual Leading Women Awards was held in late April at the Citizens Bank Rotunda. Partnering with Rhode Island Monthly Magazine, GSSNE was thrilled to honor eight women who lead by example and exemplify the Girl Scout mission. Each honoree was profiled in the May 2016 edition of *Rhode Island Monthly* and GSSNE was able to showcase additional information regarding the council to share with members of the community who may not know about our organization!

The Leading Women awardees, Gail Lowney Alofsin, Nancy Armstrong, Sierra Barter, Alison Bologna, Meg DeCubellis, Secretary of State Nellie Gorbea, Kathy O'Donnell, and Julie Sygiel—all former Girl Scouts—were honored at a lovely reception celebrating their professional achievements. These women are shining examples for our young female leaders of tomorrow and GSSNE is thankful for their commitment to making the world a better place.

New Website

GSSNE was proud to roll out a shiny and streamlined website in 2016 that mirrors the sites of councils nationally. This new website not only allows an easier accessibility of information to our members, but also enables the wider community who may not be involved in Girl Scouting, the opportunity to learn more in a user friendly manner. This project was very involved—we could not be happier with the results and we hope you agree!

Gill Clay Visits Rhode Island

A wonderful highlight of the summer at GSSNE included a very special visit from Gill Clay, the granddaughter of Lord Robert Baden-Powell (the UK founder of Boy Scouts who also



inspired Juliette Gordon Low to begin Girl Scouts here in the USA). Gill doesn't travel too often, so the opportunity to have her visit us was exciting! Gill toured Camp Hoffman where a "tea" was hosted in her honor. She also came to the council office for a visit and was quite thrilled with our camp and council space! She shared stories of her Girl Scout experiences around the globe with her sister Girl Scouts.

The 2016 GSSNE Cookie Sale Program-Dream Design Do!

In 2016 girls throughout our council took part in the largest girl-led business in the world, the annual Girl Scout Cookie Program. Girls sold over 700,000 packages of cookies, earned close to \$400,000 in troop proceeds to help support their activities, trips, and take action projects, and applied over \$50,000 toward the cost of GSSNE summer camp as a result of their participation. What an amazing accomplishment! COCO direct and COCO mobile allowed girls to market their businesses and track sales on their mobile devices, helping to develop the next generation of entrepreneurs.



Daynia La-Force, a former Girl Scout and head women's basketball coach at the University of Rhode Island served as our honorary cookie chair. At our annual cookie sale kick-off in November she shared some of her fondest memories from her years as a Girl Scout, especially her experiences participating in the cookie sale.

In January, we hosted our fourth annual cookie rally at the Dunkin Donuts Center with close to 900 girls, troop leaders, and family members in attendance. All who were in attendance participated in cookie related hands-on activities to help prepare them for the sale. There was so much excitement in the air and after the activities, the attendees were able to go to a Providence Bruins hockey game.



Volunteer Appreciation Celebration

On Saturday, June 4, 2016 we honored our dedicated adult volunteers at the annual Volunteer Appreciation Celebration held at our largest camp, Camp Hoffman, located in West Kingston, RI. Volunteers and their families were able to swim and boat on Larkin Pond, climb the rock wall and ropes course, and made s'mores around a campfire. Of course, food and music played a big part, too! Through generous donations from our Service Units, several gift baskets and gift bags were given away as door prizes during the event. It was a wonderful fun-filled day for our volunteers and their families!



Katie DeCubellis Memorial Foundation

Each year, GSSNE selects a local organization to be the recipient of the cookie sale community service project—troops can elect to donate a portion of their proceeds to a worthwhile cause. We want to teach girls about the importance of giving back to the community and to educate them about local non-profits. In 2016, The Katie DeCubellis Memorial Foundation (KDMF) was chosen as the recipient and troops donated \$3,617.45 to this incredible organization. Katie was a Girl Scout who was killed by a drunk driver at the age of thirteen. She was a visionary, mentor and friend and the foundation continues her legacy by promoting awareness of the dangers of drunk driving and substance abuse. Members from the KDMF organization were able to meet with troops throughout our council to talk about the work the foundation is doing in our community.



New Program Focus Areas

In August 2016, GSSNE proudly introduced five new core program focus areas that will guide the Girl Scout Leadership Experience! These focus areas include Entrepreneurship, Global, Life Skills, Outdoor, and S.T.E.A.M. (Science, Technology, Engineering, Arts, and Mathematics). Four of the five focuses follow our national program strategy, and GSSNE has added Global as a fifth area to support our local Girl Scouts in “thinking globally, acting locally” to change their corners of the world. With more than 10 million Girl Scouts and Girl Guides across the globe, Girl Scouts are connected to a special international sisterhood! GSSNE has convened a Global Action Committee (GAC) to help spearhead high quality, globally-focused programming, and they will be planning several upcoming domestic and international council-level travel opportunities.

Top Cookie Seller

The 2016 top cookie seller was Caitlyn Tiodor, an Ambassador Girl Scout from Troop 490 in East Providence. Caitlyn utilized her exceptional business skills to sell an amazing 2,426 packages of cookies. Caitlyn loves attending summer camp and was able to help pay for her camp experiences through the sale of cookies!



Girls on the Move

Thanks to a generous grant from the Frederick Henry Prince Memorial Fund at Newport Hospital, GSSNE hosted the healthy living event, Girls on the Move, in August 2016 at Camp Rocky Farm (Newport, RI) for Girl Scouts in grades K–5. Fifty-eight girls attended the day long event and 25 girls stayed overnight. Action-packed activities included Amazing Race-themed games, swimming, a sunrise scavenger hunt, Zumba®, yoga, and more! This event will grow into a recurring Signature Program for GSSNE in the next membership year.



Summer Camp

Summer 2016 was full of outdoor adventure, memory-making, and many s'mores! The season kicked off in June with 190 participants joining us for the Great Escape, a weekend program at Camp Hoffman that offers a fantastic introduction to tent camping and outdoor activities. A total of 967 campers attended summer day camp at Camp Cookie (Chepachet, RI), Camp Green Forest (West Kingston, RI), Camp Promising Acres (Swansea, MA), and Camp Rocky Farm (Newport, RI), and 669 total campers attended overnight camp at Camp Hoffman (West Kingston, RI). While participating in exciting themed sessions and enjoying traditional camp activities, campers also worked towards earning diverse badges, including the new Art in the Outdoors badge series introduced by Girl Scouts of the USA in July 2016.



Camp Hoffman Turns 95!

This year marked Camp Hoffman's 95th birthday—wow! Camp Hoffman is one of the oldest Girl Scout camps in the country and we're so proud of its long history, unique traditions, and deep magic. More than 150 people attended an anniversary celebration in September 2016, enjoying boating, arts and crafts, singing, historical displays, and special connections. We're eagerly counting down to the 100th anniversary in 2021!

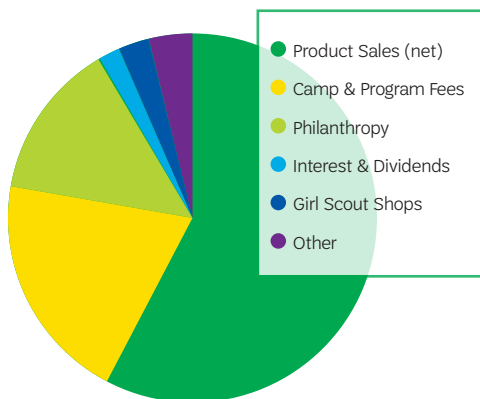


INCOME

ALL FUNDS

Product Sales (net)	\$1,745,524.00
Camp & Program Fees	\$644,904.00
Philanthropy	\$350,386.00
Interest & Dividends	\$98,675.00
Girl Scout Shops	\$102,667.00
Other	\$106,126.00
Subtotal:	\$3,048,282.00

Realized & Unrealized Gain on Investment Transactions	\$159,304.00
Increase in Value of Trust Assets	\$40,154.00
Gain on Disposition of Property & Equipment	\$-
TOTAL:	\$3,247,740.00

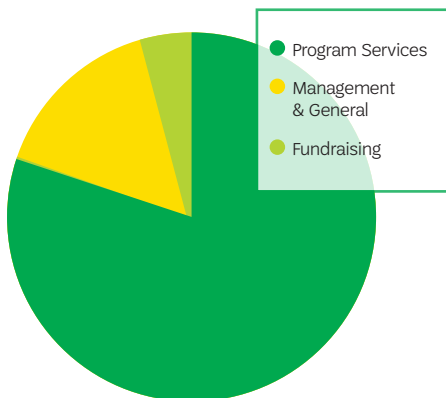


EXPENSES

ALL FUNDS

Program Services	\$2,946,488.00
Management & General	\$591,216.00
Fundraising	\$213,534.00
TOTAL:	\$3,751,238.00*

*Expenses include \$378,457 in depreciation



MEMBERSHIP

STATISTICS

Number of girls served	6,505
Number of adults served	2,238
Lifetime members	490
Cost of providing a year of Girl Scouting to one girl	\$543

IN MEMORY OF

in memory of Anthony Lisa

Angela Lisa

in memory of Bette Vermette

Jean Vermette

in memory of

Carol Ann Smith Boyes

Chris and Ellen Price

Norm and Garnette Crawford

in memory of Christine P. Stella

Nancy R. Poutray

in memory of Claire M. Nolan

Lucille A. Cassidy

in memory of Deborah Lynne McMaster Tate

Joan H. McMaster

in memory of Doris V. Piatek

Carolyn A. Piatek

in memory of Frank Merrill

Joan M. Breen

in memory of Gail Bolger

Constance Rainone

Ann L. Sensabaugh

Charles C. Peck

Anne Chase

Philip J. Willis

West Reach Estates Association

Eileen Fairbanks

Cynthia Valletta

Kelly Schmidt

Judith Fleming

Ann M. Carey

Howard and Jacqueline Farrer

Jake, Kate, May, Rebecca Bolger

& Carol Anderson

Frank and Marilyn Manzi

Arline Croce

Louise T. Decker

Henry C. Cropsey

Peter Mahoney

Sun Trust Mortgage, Inc.

C. Richard Koster

Priscilla Foley Blackman

in memory of Gay Giblin

Karen Carnevale

in memory of Jackie Farrell

Cherry Ames

in memory of Janice E. Ferraro

Annette Angeli

in memory of Jennie Potter

Warwick Neck Elementary

School PTA

Catherine T. Sharkey

George Bozigian

Mr. and Mrs. William Day

Catherine J. Maguire

Dennis Leamy

Terri Bozigian

Robert Schacht

in memory of Lila Kahn Mullins

Margery E. LeBeau

in memory of

Lillian Wante Gervais

The Wante Family

Mary Elizabeth (Betty) Durfee

Mrs. Elizabeth C. Cugini

Connie Worthington

and Terry Tullis

Carol A. Masson

Judi Harmon

Lisa Richard & Bruce Spencer

Troop 374

Lynn, Ron & Nick Lancaster

Emile, Connie, Grant

& Carmen Lepine

Anonymous

The McDonough Family

Mark and Pamela Wante

Ed and Muriel Roy

Mr. and Mrs. Patrick Butler

Thomas and Carol Ward

Carole and Robert Young

Ray and Nancy Benoit

Robert and Dianne Bonin

Cynthia and John Larned

Paula Roberge

Judith A. Boyd

Matunuck Point Beach Club

Nancy Musgrove

Joan M. Breen

Gail Sarli

Mary Campbell

Harry Romain

Ashleigh Mondoux

Lorraine Boudreau

Monica Orr

Carol Patras

Louis Liotta

Virginia A. Toner

Linus Group of All Saints Parish

Arline Bibeault

Lisa A. Baldelli Hunt

in memory of Louise Ameen

Judith Ameen Wilchynski

in memory of Mary Powers

Janice S. Howard

in memory of Mildred Richards

Ms. Ann-Marie Richards

in memory of Nancy J. O'Donnell

Stephanie Medford

Cara Quinn

in memory of Patricia K. Perry

Ann F. Anesta

in memory of William C. Meeker

Jean E. Milkman

in memory

of Winifred Kelley Sahagian

Cynthia S. Cross

IN HONOR OF

in honor of Amber Fearn

Nancy A. Telford

in honor of Anna R. Croft

Kati C. Machtlely

in honor of Babs Wallace

Cynthia Harney

in honor of Barbara J. Feyler

Lois E. McInerney

in honor of Cynthia Camero

Joan A. Fink

in honor of Deb Garneau

Anna Maria Bertorelli

in honor of Joan Breen

Stephanie L. O'Neill

in honor of

Judy Eggleston's Birthday

Betsey J. Anderson

in honor of Leaders in Girl Scouting

Anonymous

in honor of Maya Kaufman

Jacquelynn E. Kaufman

in honor of Nancy Armstrong

Margaret Roque

in honor of Pat Smith

Jennifer A. Thomas

in honor of Samantha Johnson, Troop 41149

Nancy J. Marsiglia

in honor of Sara Bradford

Gail M. Gaustad

in honor of Sarah Louise McDermott

Dr. Catherine A. McDermott

in honor of Judith Eggleston

Cindy Gise

ADULT RECOGNITIONS

Mira Hoffman Award

The Mira Hoffman Award is awarded in recognition of outstanding contributions to the work of the council and exemplifies the finest spirit of Girl Scouting.

Gertrude Shea, Warwick

Thanks Badge

The Thanks Badge honors an individual whose ongoing commitment, leadership, and service have had an exceptional, measurable impact on meeting the mission-delivery goals and priorities of the entire council or the entire Girl Scout Movement.

Laurie Pansa, Bristol/Warren

Martha Frutchey, Providence

Lisa DeCubellis, Providence

Honor Pin

The Honor Pin recognizes an individual's exemplary service in support of delivering the Girl Scout Leadership Experience, which has had measurable impact on two or more geographic areas of service, allowing the council to reach and surpass its mission-delivery goals.

Linda Arruda, East Providence

Laura Masterson, Bristol/Warren

Appreciation Pin

The Appreciation Pin recognizes an individual's exemplary service in support of delivering the Girl Scout Leadership Experience. This service, which has a measurable impact on one geographic area of service, helps the council reach and surpass its mission-delivery goals for that area.

Jo Ann Dumond,
Tiverton/Little Compton/Westport

Allana LeClair, Woonsocket

Jean McMullen, Bristol/Warren

Kit Hammett Award

The Kit Hammett Award identifies a registered adult member who has held two or more positions for at least two years exceeding the expectations held and benefits one or more service units within council jurisdiction.

Sherri Arnold, Exeter/West Greenwich

Lindsay Ayers, Bristol/Warren

Janine Brown, Newport/Middletown

Nycole DeSa, Somerset

Rebecca Foley, Pawtucket

Jen Gallant,
Tiverton/Little Compton/Westport

Neecole Massaroco, Swansea



Volunteer Years of Service

Jeanine Gawthorpe,
Wrentham/Plainville, 30 years

Jo Ann Dumond,
Tiverton/Little Compton/Westport,
25 years

Ruth Fisher, Bristol/Warren, 20 years

Colleen McBride, Seekonk/Rehoboth,
20 years

Sharon Johnson, North Scituate,
20 years

Pam Roselli Pinheiro,
North Kingstown, 20 years

Laura Masterson, Bristol/Warren,
15 years

Jean McMullen, Bristol/Warren,
15 years

Jacqueline Pierce, North Attleboro,
15 years

Rebecca Smith, Seekonk/Rehoboth,
15 years

Milestones of Membership

Freda Lehrer, Cranston, 60 years

Special Supporter Certificate

The Special Supporter Certificate is awarded to honor a group or individual who has supported Girl Scouting in the community within the GSSNE jurisdiction.

Law Offices of Jessica Clarke, P.C.

Lighthouse Christian Church

Rehoboth Antiquarian Society

Woonsocket Boys & Girls Club

The President's Award

The President's Award is presented in recognition of outstanding service to the volunteers in a service unit for achieving their goals and objectives.

Lincoln Service Unit

2016 GOLD AWARD RECIPIENTS



For more than 100 years, the Girl Scout Gold Award has represented the highest achievement in Girl Scouting. The Gold Award recognizes girls in grades 9 through 12 who demonstrate extraordinary leadership by spearheading take action projects of 80+ hours that have a sustainable impact in their communities and beyond.

Since 1916, girls have successfully answered the call to Go Gold, an act that distinguishes them as youth agents of change. The Golden Eagle of Merit (1916-1918), the Golden Eaglet (1919-1938), the Curved Bar Award (1940-1963), the First Class Award (1938-1940, 1963-1980), and finally the Gold Award (1980-present) all recognize approximately one million Girl Scouts who have worked diligently towards the highest achievement in Girl Scouting. The Gold Award showcases Girl Scouts who make a conscious effort to improve their communities and the world.

In 2016, Girl Scout councils nationwide celebrated the centennial of this prestigious honor and applauded past, present and future Girl Scouts making a mark on their communities by dedicating their passion to this highest award. Girl Scouts of Southeastern New England (GSSNE) was proud to celebrate the centennial of the Gold Award by honoring the 2016 Awardees at the Rhode Island State House.

GSSNE honored twenty-eight Silver Awardees and twelve Gold Awardees at the annual awards ceremony. Clara Crawford (North Kingstown, RI), Roxanne James (Cranston, RI), and Ashley Lamoureux (North Attleborough, MA) were nominated to Girl Scouts of the USA as National Young Women of Distinction due to their exemplary Gold Award Projects. Roxanne James was awarded a local Young Woman of Distinction scholarship of \$1,000 for her project, The Greenhouse Effect.

The ceremony took place in the beautiful State Room under the watchful eyes of President George Washington, painted by Rhode Island resident Gilbert Stuart in 1797. Governor Gina Raimondo, former Girl Scout, addressed the Gold Awardees and congratulated them on a job well done. Laurie White, President of the Greater Providence Chamber of Commerce, was in attendance as well and assisted in the ceremony. Girls and their families were able to take part in a tour of the state house and enjoyed the recognition for their hard work and commitment to Girl Scouting's highest achievement.



Erin Chille

Troop 852

North Kingstown/Jamestown
SOMETHING FISHY AT THE
MARKET: CONSUMER AWARE-
NESS OF FISH PRODUCTS

Clara Crawford

Troop 259

North Kingstown/Jamestown
ENCOURAGING MUSICAL
INTEREST AMONG YOUNG
CHILDREN

Stephanie Dowling

Troop 852

North Kingstown/Jamestown
THE SOUNDS OF LEARNING

Sarah Goss

Troop, 229

Bristol/Warren
WATER WISE

Jessica Ilgenfritz

Troop 615

Southgansett
MAKING CENTS OF MATH

Roxanne James

Troop 28

Cranston
THE GREENHOUSE EFFECT

Ashley Lamoureux

Troop 772

North Attleborough
A WALK IN THE PARK

Jennifer Lepine

Troop 374

Cumberland
MARKETING FOR NEW
VETERAN'S MEMORIAL PARK

Heather Maione

Troop 544

Apple Valley
CLEARING THE WAY

Emily O'Connell

Troop 475

East Providence
THE VEGETABLE BOX

Grace Roebuck

Troop 190

Southgansett
THE ART PHILOSOPHY

Erica Winn

Troop 190

Southgansett
WHAT ARE YOU DOING
WITH YOUR FREEDOM?



2016 DONORS

The following is a list of donors who made a gift of cash, securities, gift-in-kind, and/or made a pledge between October 1, 2015-September 30, 2016.

For the purposes of the report, matching gifts are credited to both the donor and the matching gift organization. We have made every effort to correctly identify our donors. If omissions or discrepancies are noted, please contact Jill Martens at jmartens@gssne.org so we may update our records.

\$20,000.00 +

Amica Companies Foundation
Fred M. Roddy Foundation, Inc.
The Rhode Island Foundation

\$10,000 - \$19,999

ABC Bakers
Citizens Bank
Estate of Mary C. Rogers Beckert
The Champlin Foundation

\$5,000 - \$9,999

Amica Insurance
CVS Health Charity Classic
Excell Construction Corp.
Pawtucket Credit Union
Brian A. Pitts
Schneider Electric North America
Foundation
TD Charitable Foundation
Westerly Community Credit Union

\$2,500 - \$4,999

Jewelle C. Allen
Billy Andrade-Brad Faxon Charities
for Children, Inc.
Bristol County Savings Charitable
Foundation, Inc.
E.W. Burman, Inc.
Frederick Henry Prince Memorial
Fund at Newport Hospital
Girl Scouts of the USA
Natalie Higgins
L.L.Bean
Mary E. Lafferty
Mary Dexter Chafee Fund
James & Claire Patti

Rhode Island Monthly
Communications, Inc.
Textron Charitable Trust
The John Clarke Trust,
Bank of America, N.A. Co-Trustee

\$1,000 - \$2,499

Annette Angeli
Lori A. Basilico
Blue Cross & Blue Shield
of Rhode Island
Ashley Chase
Mrs. Elfriede A. Collis &
the late Charles A. Collis
Ms. Vivian Couto
CVS Caremark Charitable Trust
Embrace Home Loans, Inc.
Andy and Polly Erickson
Fall River Women's Union
Elsie Foy
Frederick C. Tanner
Memorial Fund, Inc.
Full Power Radio Inc.
Michele A. Gariepy
Pam Hyland
Ida Ballou Littlefield Memorial Trust

Barbara Keefe
Mr. Leslie M. Kenney
KPMG, LLP
Jennifer Leigh
Locke Lord LLP
Morgan Stanley
Navigant Credit Union
Cynthia and John Paliotta
Perrino & Associates, Inc.
Providence Rotary Charities
Foundation
Bets and Gerrit Sanford
Ms. Maureen C. Sawyer
George and Susan Shuster
State Street Bank
The Mohegan Tribe
The North Family Trust
The Providence Journal Summertime
Fund at the Rhode Island
Foundation
Ann K. Throop
Heidi J. Toppel
Wakefield Rotary Club
Danielle Ward

\$500 - \$999

Gail Lowney Alofsin
Bank of America Matching
Gift Program
Beacon Mutual Insurance
Company
Jake, Kate, May, Rebecca Bolger
& Carol Anderson
Karen Bouchard
Mary E. and Nathan W. Chace
Susan and Roger Cicchini
Citizens Charitable Foundation
City of Providence—Dexter Donation
Foundation
Mr. John N. Conti
Nina and Gordon Dash
Dave's Marketplace
Deckers Outdoor Corporation
Lisa M. DeCubellis
Danielle L. Engel and Neil A. Maltais
Patricia M. Eno
June and Rod Fischer
Pauline and David Gendron
Mr. and Mrs. Ernest J. Little
Joanne Lynch
Michael D. and Mary F. Lynch
Maryann D. Martini
Tricia Meadows
Medtronic YourCause, LLC
Neighborhood Health Plan of RI
Kathleen P. O'Donnell
Rehoboth Lions Club, Inc.
Rotary Club of East Greenwich
Savers
Seekonk Lions Club Charitable
Trust
State of Rhode Island and
Providence Plantations
Susan Steiner
The Robert F. Stoico/FirstFed
Charitable Foundation
Ellen Turcotte

United Health Care of N.E.
Judith Ameen Wilchynski
Dorothy and Kenneth Woodcock

\$250 - \$499

AAA Northeast
Richard and Rebecca Alberg
Anonymous
John and Nancy Armstrong
Karen Bernard
Lisa and Loren Bowe
Loraine and Joseph Codega
Mrs. Cynthia S. Cross
Mrs. Elizabeth C. Cugini
Joanne M. Daly & Guy Millick
Mary Elizabeth (Betty) Durfee
Eastside Marketplace
The Frutchey and Richmond
Families
Martha, Jim and Liz Frutchey
Christine Fuller
Mr. John Gardner
Gilbane Building Co.
Mr. Lawrence P. Gillheeny
Donna M. Gregson
William and Lori Howard
Constance A. Howes
Lee-Ann Anderson Hurtubise
Virginia and Robert Lallo
Margery E. LeBeau
Metacomet Country Club
Deborah Myers Meilun, MD
Georgette E. Nobrega
Jill Olson-Crowley
Barbara Pellegrino
PSE Agency
Sandra Robinson
Cynthia Rollins
Patricia Ryan Murphy
Carol Schwebel
Kristin E. and Brian Scribner
Second Congregational Church

Signature Digital Offset Printing
Pat and Jay Smith
Team T.R.E.C.
Wave Federal Credit Union
Woonsocket Lions Club
Connie Worthington and Terry Tullis
Yogurt Beach New England

\$100 - \$249

Donna and Joe Amaral
American Postal Workers Union
—PRIAL 387 APWU
Anonymous
Arbella Insurance Group
Stefanie Argus
Arline Bibeault
Matthew S. Blank
Joan M. Breen
Marilyn Browning
Kenneth and Anne Marie Buteau
Dr. and Mrs. Norman Campbell
Ann M. Carey
Karen Carnevale
Ms. Lucille A. Cassidy
Sarah D. Cholewa
Cynthia A. Clancy
Patrick H. Collins
Patricia and Roland Coutu
Norm and Garnette Crawford
Henry C. Cropsey
Cheryl Curtis
Katie Davis
Margaret and John DeCubellis
Dr. Lenore A. DeLucia
Jane A. Desforges
Mr. and Mrs. Joseph V. DeStefano
Jayne Donegan
Peter and Maryann Drogan
Ms. Karen M. Edwards
Eversource Energy Foundation
Armanda Famiglietti
Katherine Fandetti
Howard and Jacqueline Farrer
Janet A. Feyler
Judith Fleming
FLIR Systems, Inc.
Patricia J. Fontes
Ms. Cleora M. Francis-O'Connor
Gail Gaustad
GFWC—Cranston Community
Women's Club
GFWC Wampanoag Women's Club
Stacy A. Glynn
Diane Goldsmith
Ms. Janet S. Handford
Carmen and Brian Harten
Representative Joy Hearn
Ms. Sandra L. Hill
Mr. and Mrs. Alan Hubbard
Walter and Dottie Hunter
Leo G. Hutchings
Mrs. Sheila R. Hutton
JH Communications, LLC
Mary H. Johnson
Ms. Margaret E. Kane
Elissa and Matt Koskela
William and Diane Kowal
Lions Club of Attleboro Tri-Boro
Community
Susan Mansolillo
Neecole Massaroco
Laura A. Masterson
Mr. and Mrs. Norman E. McCulloch,
Jr., Trustees, McAdams Charitable
Foundation
Catherine McDermott
Diane B. and Anthony J. Milla, Sr.
Miriam E. Montag
Louise Moore
Kenneth and Virginia Newhall
Mr. Paul C. Nicholson, Jr.
Mr. Robert P. O'Connell
Sharon and Robert O'Connell
Frank O'Donnell
Ms. Linda P. O'Neill
J. Timothy and Dorothy O'Reilly

Senator M. Teresa Paiva-Weed
Lynne M. Palmisciano, MD and
Mr. Peter McIntyre
Charles C. Peck
Lianne Pinheiro
Cara Quinn
Denise Robin
Laurie Roebuck
Harry Romain
Ms. Sally Russell
Linda Schofield
Ann L. Sensabaugh
Jane and Deming Sherman
Russell Silva
Barbara Jean Silva
Mr. and Mrs. Harry Sleicher
Ruth M. Sleicher
David M. Smith
Jane E. Sullivan, Esq.
Kathryn Tancrelle
Nancy A. Telford
Philip and Sandy Tessier
The NKD Group, Inc.
Margaret Tryforos and Paul
Thompson
Thomas and Elinor Tibbatts
Representative Stephen Ucci
University of Rhode Island Athletics
Jean Vermette
Barbara M. Wallace
The Wante Family
William and Ashley Webster
Dr. Carol A. Wheeler and
Mr. Robert W. Parker
Barbara and Steve Williams
Laura B. and Michael W. Williams
Philip J. Willis

Under \$100

Ms. Debra B. Abeshaus
Mrs. Carroll S. Adams
Dawn Ahearn

Cynthia M. Alves, MD
Amazon Smile
Betsey J. Anderson
Susan E. Anderson, PhD
Anonymous
Linda Arruda
Suzanne G. Ayvazian and
Boze T. Hancock
Lisa A. Baldelli Hunt
Donna G. and David J. Barboza
Barrington Books Retold
Andrea Bartucca
Diane Baxter
Mary Belmonte
Raymond and Nancy Benoit
Anna Maria Bertorelli
Sandra Bessacini
Paul Bettencourt
Mr. and Mrs. James Bierden
Gretchen Biggs
Tasha Bizier
Cheryl Boergesson
Robert and Dianne Bonin
Lorraine Boudreau
Judith A. Boyd
Mr. George Bozigian
Terri Bozigian
Katherine Bradshaw
Troop 602
Joyce Butler
Mr. and Mrs. Patrick Butler
Mr. and Mrs. Mark S. Cabatingan
Cafe Nuovo
Cara Camire
President Nancy Carriuolo
Ms. Nancy N. Caswell
Wanda Cavedon
Anne Chase
Diane M. Cheever
Hui Chen
Jacqueline A. Chevalier
Kimberley Chiappone
John and Joan Christy

Niamh Clifford
Diane J. Cloutier
Barbara Cobb
Martin and Elizabeth Cohen
Susan F. Cooper
Katherine Corte
Katherine M. Cowett
Mr. and Mrs. Jeffrey P. Crawford
Andrea Creach
Arline Croce
Marion F. Dale
Mr. and Mrs. William Day
Sussy De Leon
Louise T. Decker
Nicole DiBenedetto
Kate Donnelly
Roberta Dowding
Brandon Druch
Edward Francis Dunn
Renee Elderkin
Molly Emond
Ms. Sally Erskine
Evergreen Executive Source, LLC
Claire and Domenick Fabrizio
Betty and Tony Faella
Robert and Eileen Fairbanks
Margaret W. Falb
Katherine A. Famiglietti
Dawn Farias
Cherry Ames
Kathryn Farrington
Michael J. Faucher, Sr.
Joan A. Fink
Tatiana Fish
Priscilla Foley Blackman
Judith D. Foltz
Linda S. Forster
Fresco
Ms. Alice Furtado
Jen Gelineau
Cindy Gise and Elaine Martin
Tonya Glantz
Selda and Harry Goldberg

Tamara Graham
Mr. and Ms. David R. Gray, Jr.
Eivalicia Guertler
Mrs. and Mr. Tracy T. Hands
Judi Harmon
Aimee Harpin
Lise and Alan Hasegawa
Elisabeth Head
Gretchen Heath
Therese Hem
Ms. Eva D. Heroux, MBA, CFRE
Mr. John Houle
Janice S. Howard
Kathrine Hunt
Kate Huot
Michelle Huskey
Mr. and Mrs. Charles E. Ilgenfritz
Iron Works Tavern
Mr. Theodore F. Jakubowski
Annette James
Daniela Jensen
Meghan Kampper
Mrs. Jacquelynn E. Kaufman
Kevin Klyberg
C. Richard and Jane Koster
K. Berit Kosterlitz
Joseph Koszela
Martha Krollman
Ms. Hlee Kue
Amy La Rochelle
Laura La Tour
Tammy J. and Louis D. Lamoureux
Cynthia and John Larned
John F. Law
Mr. Dennis Leamy and K Leamy
Emile, Connie, Grant & Carmen
Lepine
Lyse and Richard Lepine
Becky Leuvelink
Cynthia Lewis
Christine Liasu
Liberty Mutual Insurance Company
Helga Liese

Ms. Sara E. Lilligreen and
Mr. Michael J. Montoya
Sandra D. and Carl E. Lindstrom
Lions Club of Rumford
Louis Liotta
Angela Lisa
Pamela LoGioco
Jessica Luis
Carolyn Lynch
Katherine Lyons
Kati and Ronald Machtley
Mrs. Catherine J. Maguire
Peter Mahoney
Mrs. Virginia L. Mancini
Frank and Marilyn Manzi
Mrs. Judith C. Marak
Robert and Judith Marak
Market Fine Wine & Spirits
Charlotte and Hugh Markey
Nancy and Louis Marsiglia
Jill and Sebestyen Martens
Marie Martin
Bethany Mascena Tracy
and Gareth Tracy
Anne and Richard Masse
Ticiana Massi Grenga
Carol A. Masson
Mrs. Elizabeth Master
Christine Mattio
Matunuck Point Beach Club
Margaret McDonald
The McDonough Family
Michael Mcdonough
Pamela McGinn
Susan Gerbi-McIlwain
Andrea McLaughlin
Anne Marie McLaughlin
Ms. Joan H. McMaster
Elizabeth and Dave McNab
Stephanie Medford
Rachel Mellen
John Melone, Jr.

Timothy Mertens
Maydith Merz
Kimberly M. and Bryan A. Messier
Holly Meyer
Jean and Howard Milkman
Mr. John W. Miller, Jr.
Laura Minadeo
Christina H. and Steven A. Minicucci
Anne and George Mirza
Ava Miskiewicz
Mohegan Holding Company, LLC
Ashleigh Mondoux
Gail L. and James J. Montague
Nancy Musgrove
Charles Narciso, Jr.
Cathrine Nelson
Joyce Neves
Richard Nixon
North Kingstown Rotary Club
Not Your Average Joe's
Nancy Nowak
Kerri Nunn
Gricel Ocampo
Brenda Octaviano
Jennifer Ogren
Stephanie O'Neill
Megan O'Rourke
Mrs. Monica Orr
Lorraine Padmos
Samantha Palacio
Trisa V. Palacio
Ms. Mary Jane Palm
Mr. Matthew Palmer
Laurea L. Pansa
Carol Patras
Joanne Patterson
Richard and Jeanne Pelletier
Beverly R. Perry
Angelleen Peters-Lewis
Beth Peterson
Sarah Peterson
Cristin Petisca
Gina Petrucci

Nichole Phelps
Ms. Carolyn A. Piatek
Laura Picozzi
Maureen Pinksaw
Rachel Pintarelli
Wendy Piret
Alyssa Polofsky
Mrs. Arthur R. Poutray
Chris and Ellen Price
Constance Rainone
Pamela and Robert Rao
Jeanne Reddy
Rebecca L. Reynolds
Lisa Richard & Bruce Spencer
Ms. Ann-Marie Richards
Wanda Rivera
Paula Roberge
Margaret and Joseph Roque
Ann and Robert Rosenblatt
Helen Rowe-Drake
Ed and Muriel Roy
Richard Rusk
Patricia Sanford
Gail Sarli
Mr. and Mrs. Robert Schacht
Kelly Schmidt
Colleen Scott
Jamie Senn
Tammy L. and Arthur Sgalia
Catherine T. Sharkey
Gert Shea
Mrs. Frances Shippee
Priscilla Shube
Jane and Peter Shuman
Ms. Janice I. Spence
Toni-Maria Spencer
Ms. Betty E. Stacey
Mrs. Christine R. Stevens
Sun Trust Mortgage, Inc.
Olivia Surro
Swarovski North America Limited
Marcia Sweeney
Mr. and Mrs. Thomas E. Sweeney, Jr.

Mary Jo Takach
Katharine and Fred Tarasuk
Mr. Nicholas A. Tartaglione
Marie Theriault
Jennifer A. Thomas
Thorpe's Wines & Spirits
Virginia A. Toner
Joanne Toppa
Michelle Vaitses
Cynthia Valletta
Susan J. Viau
John Vittoriosio
Linda and Brad Voelz
Chetra Vongvixay
Sing Vu
Mr. and Mrs. Daniel A. Walter
Mark and Pamela Wante
Thomas and Carol Ward
Elizabeth S. Warren
Warwick Neck Elementary School
PTA
Lalanya Way
West Reach Estates Association
Mrs. Ruth B. Whipple
Wines & More of RI
Lisa and William Winn, Jr.
Carole and Robert Young

UNITED WAY'S, ETC

While GSSNE does not receive direct United Way funding, we do appreciate the assistance of the following agencies that administer donor designations.

Bank of America United Way Campaign

Rhode Island and Southeastern Massachusetts Combined Federal Campaign

United Way of Greater Fall River, Inc.

United Way of Greater Philadelphia and SNJ

United Way of Rhode Island, Inc.

United Way of Southeastern Connecticut, Inc.

United Way of South Hampton Roads

“The work of today is the history of tomorrow, and we are its makers.”

JULIETTE GORDON LOW

Thank you so much for taking a look back at our 2016 Fiscal Year. You've helped us impact the lives of 6,500 girls, and here is a special story of two...

In July, Malala Yousafzai came to Providence to share her story. GSSNE was lucky to receive a handful of tickets to offer to girls willing to share their stories—we wanted to know why seeing Malala would be inspiring or meaningful to them. In one “application”, soon to be third grader, Hailey N. shared her story with us,

“...I read ‘I am Malala’ in second grade. I was the only one in my class who knew about Malala, I taught all my friends about her because I was so inspired. My teacher taught our class about her because everyone became so interested! I have much in common with Malala, I am Muslim and my dad was a soldier in the U.S. Army and fought the Taliban. My dad was blown up by a bomb called an IED and shot by a sniper in the arm. My mom’s side of the family is from Turkey

and just like Malala standing up against the Taliban, girls from Turkey must stand up against ISIS. Since reading ‘I am Malala’, I’ve been watching her speak on YouTube. I love how she stands up for girls education rights and she inspires me to stand up to things that are not fair. I’ve been wanting to see her in real life. It would be the world to see her.”

How inspiring! Hailey used her life experience and compassion to teach her peers about Malala—two true examples of courage, confidence and character! After the event, we heard from Olivia B. who shared,

“I’m so grateful that I was chosen to see Malala Yousafzai. Last night’s experience was definitely an event that I will never forget. Malala’s message was that it is never too late to pitch into the world and help out. Malala’s saying is, ‘if you can dream it you have the power to create it.’ I believe that any girl has the power to do what they want to do. I have learned so much just from last night’s experience.



Pictured: Hailey and sister Ella reading their Malala books.

I realize that girls have the power to create and to change the world to make it better. Thank you again for the tickets. I hope you enjoy the rest of your summer. I can't wait to start Girl Scouts again in the fall.”

We are so grateful for the community that surrounds us and provides the chance for our girls to hear from true agents of change. Knowing that this opportunity gave girls like Olivia and Hailey motivation to continue making the world a better place is heartwarming. Let's strive to continue towards greatness in 2017!

2016 BOARD OF DIRECTORS

OFFICERS

Chair, George W. Shuster

1st Vice Chair, Joanne Lynch

2nd Vice Chair, Michael D. Lynch

Secretary, Elsie Foy

Treasurer, James Patti

MEMBERS-AT-LARGE

Laura DiMillo Barnes

Lori A. Basilico

Katie Davis

Lisa M. DeCubellis

Gina DeVecchis

Christine D'Orsi Fitta

John Houle

Jennifer Leigh

Bill Logan

Jael Lopes

Angelleen Peters-Lewis

Sally A. Russell

Danielle M. Ward

HONORARY MEMBERS

Elizabeth C. Cugini

Thank



You



All



GIRL SCOUT MISSION

Girl Scouting builds girls of courage, confidence, and character who make the world a better place.

GIRL SCOUT PROMISE

On my honor, I will try:

To serve God and my country,
To help people at all times,
And to live by the Girl Scout Law.

GIRL SCOUT LAW

I will do my best to be
honest and fair,
friendly and helpful,
considerate and caring,
courageous and strong, and
responsible for what I say and do,
and to
respect myself and others,
respect authority,
use resources wisely,
make the world a better place, and
be a sister to every Girl Scout.



GIRL SCOUTS OF SOUTHEASTERN NEW ENGLAND
500 GREENWICH AVENUE, WARWICK, RI 02886
401.331.4500 / 800.331.0149 / FAX: 401.421.2937

Nonprofit
Organization
U.S. Postage
PAID
Providence, RI
Permit No. 220